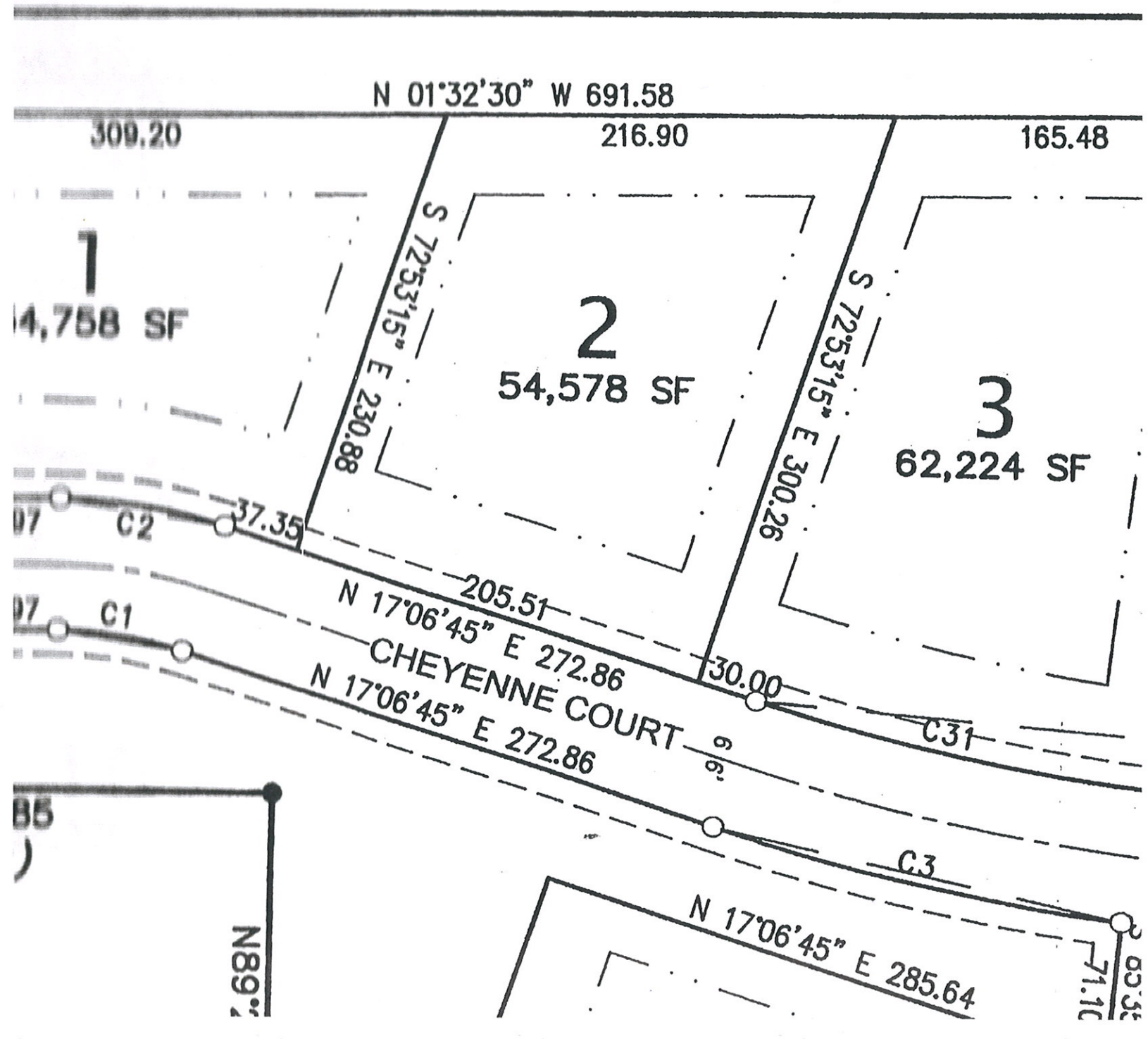


TOWN 9 NORTH, RANGE 19 EAST,
RICHLAND, WASHINGTON COUNTY,
WISCONSIN

UNPLATTED LANDS

Dakotah Fields
Lot 2
NOT TO SCALE



Dakotah Fields - CURVE TABLE - Dakotah Fields

LOTS NO.	CURVE	LENGTH	RADIUS	DELTA ANGLE	CHORD DIRECTION	CHORD	TANGENT IN	TANGENT OUT
OL 4	C1	61.58	200.00	17°38'30"	N08°17'30"E	61.34	N00°31'45"W	N17°06'45"E
1	C2	81.90	266.00	17°38'30"	N08°17'30"E	81.58	N00°31'45"W	N17°06'45"E
OL 4	C3	203.44	1066.00	10°56'04"	N11°38'43"E	203.13	N17°06'45"E	N06°10'41"E
37	C4	88.72	400.00	12°42'30"	S79°14'30"E	88.54	S85°35'45"E	S72°53'15"E
31	C5	103.36	466.00	12°42'30"	S79°14'30"E	103.15	S85°35'45"E	S72°53'15"E
32-35	C6	338.29	85.00	228°01'35"	N06°54'02.5"W	155.29	S72°53'15"E	N59°05'10"E
31-32	C7	191.95	229.00	48°01'35"	S83°05'57.5"W	186.38	N59°05'10"E	S72°53'15"E
3, OL 1, 4	C8	460.77	1000.00	26°24'00"	N03°54'45"E	456.70	N17°06'45"E	N09°17'15"W
OL 4	C9	221.73	1066.00	11°55'04"	N03°19'43"W	221.33	N02°37'49"E	N09°17'15"W
29-30	C10	206.21	500.00	23°37'46"	N02°31'38"E	204.75	N09°17'15"W	N14°20'31"E
6, OL 1, 7	C11	233.42	566.00	23°37'46"	N02°31'38"E	231.77	N09°17'15"W	N14°20'31"E
OL 4	C12	190.54	366.00	29°49'39"	N00°34'18.5"W	188.39	N14°20'31"E	N15°29'08"W
10-11	C13	156.17	300.00	29°49'39"	N00°34'18.5"W	154.42	N14°20'31"E	N15°29'08"W
OL 4	C14	223.84	200.00	64°07'36"	N73°25'20"W	212.34	N74°30'52"E	S41°21'32"E
24-25	C15	297.71	266.00	64°07'36"	N73°25'20"W	282.42	N74°30'52"E	S41°21'32"E
OL 4	C16	144.46	166.00	49°51'38"	S66°17'21"E	139.94	S41°21'32"E	N88°46'50"E
OL 3	C17	87.02	100.00	49°51'38"	S66°17'21"E	84.30	S41°21'32"E	N88°46'50"E
OL 1	C18	98.75	100.00	56°34'44"	S46°13'30"W	94.79	S74°30'52"W	S17°56'08"W
OL 2, 12	C19	163.93	166.00	56°34'44"	S46°13'30"W	157.34	S74°30'52"W	S17°56'08"W
OL 1	C20	236.07	166.00	81°28'46"	N58°40'31"E	216.67	S17°56'08"W	N80°35'06"W
12, OL 3	C21	142.21	100.00	81°28'46"	N58°40'31"E	130.52	S17°56'08"W	N80°35'06"W
OL 3, 22-23	C22	693.90	500.00	79°30'56"	S24°16'20"W	639.54	N15°29'08"W	N64°01'48"E
OL 2, 13-15, OL 3, 16-17	C23	785.50	566.00	79°30'56"	S24°16'20"W	723.96	N15°29'08"W	N64°01'48"E
18-21	C24	333.80	85.00	225°00'00"	N25°58'12"W	157.06	S41°31'18"W	N86°31'48"E
35	C25	60.79	85.00	40°58'34"	N86°37'28"E	59.50		
34	C26	96.75	85.00	65°12'49"	N33°31'46"E	91.61		
33	C27	93.03	85.00	62°42'37"	N30°25'57.5"W	88.46		
32	C28	87.72	85.00	59°07'34"	S88°38'57"W	83.87		
32	C29	110.24	229.00	27°34'53"	N72°52'36.5"E	109.18		
31	C30	81.71	229.00	20°26'42"	S83°06'36"E	81.28		
3	C31	193.56	1000.00	11°05'25"	N11°34'02.5"E	193.26		
OL 1	C32	66.05	1000.00	3°47'03"	N04°07'48.5"E	66.04		
4	C33	201.16	1000.00	11°31'32"	N03°31'29"W	200.82		
30	C34	32.82	500.00	3°45'37"	S07°24'26.5"E	32.81		
29	C35	173.39	500.00	19°52'09"	S04°24'26.5"W	172.52		
6	C36	88.72	566.00	8°58'51"	S04°47'49.5"E	88.63		
OL 1	C37	50.01	566.00	5°03'47"	S02°13'29.5"W	50.00		
7	C38	94.69	566.00	9°35'08"	S09°32'57"W	94.58		
10	C39	64.81	300.00	12°22'42"	N08°09'10"E	64.69		
11	C40	91.36	300.00	17°26'57"	N06°45'39.5"W	91.01		
24	C41	236.45	266.00	50°55'49"	N80°01'13"W	228.74		
25	C42	61.26	266.00	13°11'47"	N47°57'25"W	61.13		
OL 2	C43	108.85	166.00	37°34'08"	S55°43'48"W	106.91		
12	C44	55.08	166.00	19°00'36"	S27°26'26"W	54.82		
12	C45	39.89	100.00	22°51'23"	N29°21'49.5"E	39.63		
OL 3	C46	102.32	100.00	58°37'23"	N70°06'12.5"E	97.91		
OL 3	C47	449.60	500.00	51°31'16"	S10°16'30"W	434.61		
23	C48	208.38	500.00	23°52'42"	S47°58'29"W	206.87		
22	C49	35.92	500.00	4°06'58"	S61°58'19"W	35.91		
OL 2	C50	31.03	566.00	3°08'29"	S13°54'53.5"E	31.03		
13	C51	155.01	566.00	15°41'29"	S04°29'54.5"E	154.52		
14	C52	155.01	566.00	15°41'28"	S11°11'34"W	154.52		
15	C53	155.01	566.00	15°41'28"	S26°53'02"W	154.52		
OL 3	C54	20.00	566.00	2°01'29"	S35°44'30.5"W	20.00		
16	C55	155.00	566.00	15°41'28"	S44°35'59"W	154.52		
17	C56	114.44	566.00	11°35'05"	S58°14'15.5"W	114.25		
21	C57	105.55	85.00	71°08'59"	N50°57'18.5"E	98.90		
20	C58	93.09	85.00	62°44'42"	N15°59'32"W	88.50		
19	C59	83.55	85.00	56°18'53"	N75°31'19.5"W	80.22		
18	C60	51.61	85.00	34°47'26"	S58°55'31"W	50.82		